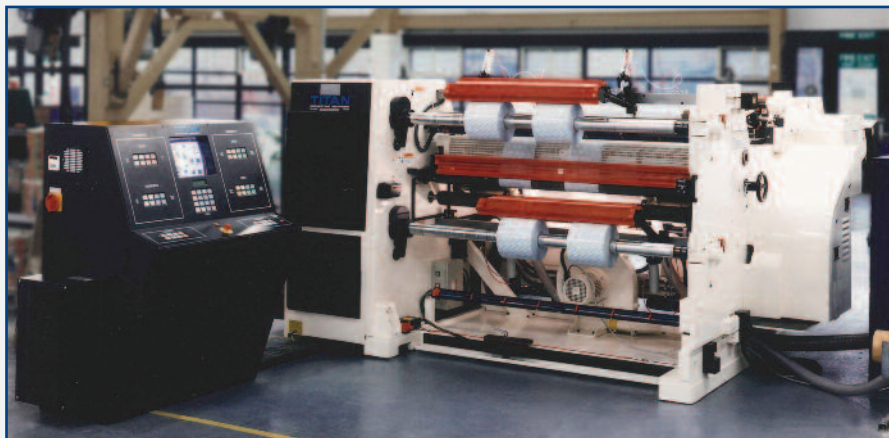


Titan slitter rewinders celebrate 50 years as technology leader



Sales of the Titan SR6 duplex slitter rewriter (1990 – 2000) were the most successful in the history of Titan, with 570 machines installed worldwide

"The Titan brand has become synonymous globally with high quality and high performance slitting & rewinding technology."

Atlas Converting Equipment Ltd. is pleased to announce that during 2014 it is celebrating 50 years of excellence in slitting & rewinding technology for its TITAN range of products.

To mark the occasion, special '50th Anniversary' Open House events will be held during the autumn of 2014 at Atlas Converting Equipment Ltd. in Bedford (UK) and at Atlas Converting North America, Inc. in Charlotte, NC (USA), when the latest Titan slitter rewriter technology will be demonstrated, together with some of Titan's partner suppliers.

All Titan slitter rewinders sold for delivery during 2014 will feature a special 50th Anniversary machine livery and those customers will also receive a commemorative gift. Pages dedicated to the 50th Anniversary are viewable on the Atlas-Titan website at www.atlasconverting.com/company/anniversary with a history of Titan, its machines and milestones which all started back in 1964 in London.

The first Titan duplex slitter rewriter was built by Frank F. Pershke Ltd. that year when the company was based in Bow, in the east end of London and the SR1 model was the first machine introduced in the Titan SR Series. It was sold to Independent Newspapers Ltd. in Dublin, Ireland but unfortunately was never installed as a result of hitting a low bridge

during transportation! Not surprisingly, the SR2 model replaced it the following year and by the mid-1970s sales of the Titan SR3 slitter were rapidly gathering momentum.

Following re-location of the company to south London and in a period of no more than 10 years, the Titan name had become established as a successful twin-shaft cantilever slitter rewriter and had been exported and installed in many countries around the world. Its success was of course largely linked to the huge development of extruded plastic film used for flexible packaging materials, which expanded rapidly worldwide during the 1970s, 80s and 90s.

Of all the Titan SR duplex slitter rewinders produced over the years, the SR6 model was the most successful with 570 machines sold over a period of almost 10 years from 1990 to the year 2000. Currently, the Titan SR9 Series is bench-marking slitting & rewinding technology with many unique design features to maximize productivity and rewind reel quality for converters.

'It is a privilege to be part of Titan's success and especially this milestone in the history of our range of products,' commented Barrie Homewood, Sales & Marketing Director for Titan. 'The Titan brand has become synonymous globally with high quality and high performance slitting & rewinding technology and with more than 2,500 installations in over 70 countries it is widely acknowledged as a leading supplier in its market sector,' he confirmed.



The Titan SR2 slitter rewriter (circa. 1965) many of which are still in production today

Daelim Industrial (South Korea) starts up new BOPP film line & 8.7m wide Atlas CW1040 film splitter

"The new Atlas CW1040 film splitter is now running 24/7 and achieving all our current demanding production requirements."



The new generation Atlas CW1040 Series primary film splitter during commissioning at Daelim Industrial

Daelim Industrial Co. Ltd. of South Korea has completed commissioning and start-up of a new BOPP film production line with a new 8.7m wide Atlas CW1040 Series primary splitter rewinder at the company's extensive production facility in the city of Jeonju, approx. 100km south of the capital, Seoul.

The new film line represents a major expansion of production capacity in BOPP film for the Daelim Group with an estimated annual production capacity of approx. 38,000 tonnes.

This major Korean company was founded in 1939 when it was involved in the civil engineering, construction and lumber industries. It became known as Daelim Industrial in 1947 and was first involved in the petrochemical sector in 1979, which remains one of its core business activities today.

Daelim, with its head office in Seoul, is the country's biggest producer of resin compounds and many types of plastic extrusions including BOPP, LDPE and HDPE films for flexible packaging applications and plastic materials for the construction industry.

The new CW1040 Series film splitter provides the latest technology platform of more compact film slitting solutions from Atlas in web widths from 8 to 10.4 metres and delivers higher efficiency, increased productivity and reliability, higher quality rewind reels, reduced noise levels and more effective, operator-friendly control systems.

Daelim Industrial was one of the first Atlas customers to invest in this new technology

platform and confirmed the order at the end of 2011.

The new Atlas CW Series splitter rewinder features wireless rewind arm positioning, automatic knife positioning, direct drive web path rollers and running speeds of up to 1,500 m/min. with more precise web tension control.

Electrical cabinets are now fully integrated into the machine to reduce the space required for installation with under-floor service channels no longer required.

"We first installed a 6.6m wide Atlas primary film splitter in 1997 together with a 2.3m wide CW500 secondary film splitter and in the following year two 1800mm wide Titan SR6 duplex splitter rewinders for narrower width packaging films," explained Mr. Dong-Ho Bae, Vice-President & Director of the Daelim OPP Film Business Division.

"These Atlas & Titan machines have been very reliable and have performed extremely well for our company, so we were very confident about investing in the new Atlas CW Series primary splitter for our new film production line."

"The CW1040 is now running 24/7 mainly processing 12 – 40 micron BOPP film at speeds up to 1,200 m/min and is achieving all our current demanding production requirements," he confirmed.

"We are delighted to have been chosen again as a preferred supplier of Daelim Industrial for this important new project," added Peter Brudzinski, Atlas Regional Sales Manager for SE Asia.

"We wish the company every success and we will continue to provide full technical support if required for all the Atlas & Titan installations at Daelim in the future."

Peter J. Brudzinski
Regional Sales Manager
South East Asia



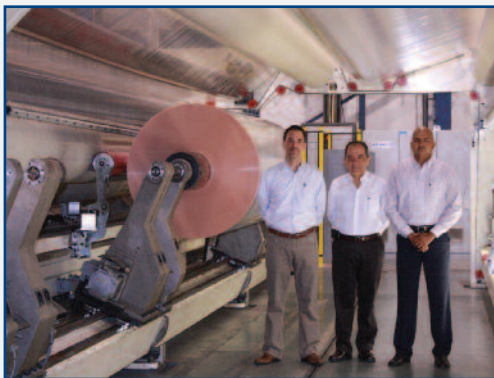
Oben Group / OPP Film (Peru) is first to install new 4.8m wide Atlas CW5400 film slit

OPP Film S.A. of Peru is part of Oben Holding Group and is a rapidly expanding company which first commenced operations in BOPP film production in 1991 with the foundation of BOPP del Ecuador S.A.

This company exported film to the neighbouring countries of Colombia & Peru and then commenced production of BOPP film in Peru in 2003 with the establishment of OPP Film S.A. in Lima.

Since then, continuing rapid expansion of business has led the Oben Holding Group to invest in additional BOPP, BOPET and CPP film lines, an extrusion coating line, vacuum metallizing machinery and acquisition of other South American film producers.

It is a creative and modern industrial group that develops, produces and sells polypropylene (PP) film for flexible packaging for consumer goods and other industrial applications, coated film for the graphic arts industry and thermoformed PP products. It is now present in more than 25 countries in the Americas, Africa and Europe.



Erik Sosa, Technical Director, Oben Holding Group (centre) with Jalil Majluf, Engineering Manager (left) and Brainlin Castro, Plant Manager (right) at OPP Film S.A. in Lima

This year, OPP Film will become the first company to install and commission the 'next generation' Atlas CW5400 Series slitte rewinder at 4.8m wide. The Atlas CW5400 is available in widths from 3,600 to 5,400mm and the complete CW Series of more compact film slitting solutions now covers machine widths from 2,500mm to 10,400mm with running speeds up to 1,500m/min.

The first of two CW5400 film slitters ordered will be installed at OPP Film in Lima during Q3 this year and will be processing the world's widest metallized BOPP film currently available



Oben Holding Group head office in Lima

at 4500mm. The second CW5400 film slitte will be installed and commissioned early in 2015.

Major benefits of the new Atlas CW Series technology include higher efficiency, increased productivity and reliability, higher quality rewind reels, reduced noise levels and more effective, operator-friendly control systems.

The Atlas CW Series has been designed to cope with the increasing speed of film production lines and does not just rely on a sustainable, increased running speed to achieve this - the CW Series also has faster acceleration and deceleration cycles.

Compared to a conventional film slitte running at 1,500m/min. producing rewind lengths of 8,000m, the Atlas CW Series will have a faster rewind cycle, but at only 1,200m/min.

When running much longer rewind lengths at a speed of 1,500m/min., together with faster acceleration & deceleration cycles, the new CW Series far out-performs conventional film slitters.

Atlas has now sold more than 70 of the new CW Series slitte rewinders since their introduction in 2012, in widths from 2,500mm to 10,400mm for BOPP, BOPET and CPP films.

This latest Atlas technology features wireless rewind arm positioning, automatic knife positioning and direct drive web path rollers ensuring optimum web tension for films as thin as 6 micron and up to 125 micron. Electrical cabinets are now fully integrated in to the machines to reduce the space required for installation with under-floor service channels no longer required.

'The first Atlas CW5400 film slitte will be processing the world's widest metallized BOPP film currently available at 4500mm.'

The 4.8m wide Atlas CW5400 film slitte under construction at Atlas in Bedford, UK



Titan SR9-DT Dual Turret rewinder makes positive impact at Cenveo-Gilbreth Packaging (USA)

"We are very impressed with the productivity of the new Titan SR9-DT turret slitter. Downtime between reel set changeovers is virtually non-existent."



The Titan SR9-DT Dual Turret rewinder has made "an extremely positive impact on slitting capabilities" at Gilbreth Packaging

CMS Gilbreth Packaging Systems, Inc. ("Gilbreth"), a division of Cenveo Labels & Packaging, has installed a 'new generation' Titan SR9-DT Dual Turret slitter rewinder at its production facility in Croydon, Pennsylvania, 20 miles north-east of Philadelphia, USA.

Gilbreth is a US leader in flexible packaging, labeling solutions and key innovator in the ever-changing shrink sleeve marketplace. A forerunner within a group of flexography focused US shrink sleeve converters, Gilbreth changed the market by introducing gravure printing on shrink films. This offering allows clients to benefit from superior print quality and market leading brand consistency.

Gilbreth's new Titan SR9-DT slitter is 1650mm (65") wide with capacity up to 700mm (27.5") rewind reel diameters on both 76 & 152mm (3" & 6") cores. It also features an automatic knife positioning system with 30+ Dienes knives. The Titan SR9-DT includes the Optimum Roll Conditioning and Guider to Knife Positioning systems which help reduce material waste for a more sustainable solution.

The new slitter can process a wide range of materials to a minimum slit width of 25mm (1") on both 76 & 152mm (3" & 6") cores. Additionally, it has an automatic electronic slit reel unloading system to meet the expanding production requirements of the company.

"We are very impressed with the productivity of the new Titan SR9-DT turret slitter," commented Brian Garnett, VP and General Manager at Gilbreth. "Set-up for rewinding multiple narrow slit widths for our labels business is systematic and streamlined. Downtime between reel set changeovers is virtually non-existent. This investment has

made an extremely positive impact to our slitting capabilities," he confirmed.

"The Linear Tracking Slitter (LTS) section on the Titan SR9 Series slitters ensures the shortest and most consistent web length between the knives and rewind shafts for improved web control. This advancement provides the highest possible side wall quality of rewind reels and helps reduce waste," added Brian Stiff, Sales Manager for Atlas & Titan.

The new features provide exceptional performance and productivity at running speeds of up to 1,000m/min (3,300 ft/min.). The SR9 Series is also available in a 2250mm (88") machine width.

Gilbreth is a nationally recognized powerhouse in the shrink sleeve labeling and tamper evident band marketplace. Since 1961 Gilbreth has been an industry leader offering strategically engineered full body shrink sleeve labels, a successful alternative to pressure sensitive paper & film labels. In 1983 Gilbreth took the same strategized approach to bring the market cutting-edge graphic reproduction, but this time with tamper evident bands.

"From the moment we rolled out the offering to our customers, tamper evident bands have proven to be a value added offering to our clients. Not only does a tamper evident band offer peace of mind to the consumer that a product is fresh and has not been tampered with, but it can simultaneously give a package a higher perceived value," stated Brian Garnett.

Gilbreth is an integral part of the Cenveo Labels & Packaging Group, a subsidiary of Cenveo Corporation, a world leader in the management and distribution of print and related offerings. Cenveo is a \$2bn company with a long history of delivering top value for its customers. Headquartered in Stamford, Connecticut, Cenveo encompasses more than two dozen entities in over 50 facilities across the USA, as well as international operations in Asia and Central America.



Brian M. Stiff
Regional Sales Manager
North America



Nampak Ltd. (South Africa) boosts production of flexibles with two new Titan ER610 slitter rewinders

Nampak Ltd. is Africa's leading packaging company. It not only has extensive operations in South Africa but also in ten other countries on the continent, as well as nine production sites in the UK supplying light-weight HDPE bottles for the food, drink & dairy industries.

In South Africa the company provides high quality solutions in paper, board & glass packaging, rigid plastics, metal containers, bar coding and labelling solutions as well as extensive recycling operations and research & development in packaging.

The company has recently installed two 1350mm wide Titan ER610 compact slitter rewinders - one at its Flexibles Division in Pinetown, Durban and the second slitter at its operations in Cape Town - to boost its expanding production of a wide range of flexible packaging materials.

'We already had seven Titan slitter rewinders at our plants in South Africa including the SR6, SR7 and TS350 models from 1994 through to 2001. So we were familiar with the high performance, quality and service which Titan provides for processing flexible packaging materials,' explained Mr. Anand Padayachee, General Manager at Nampak Flexible in Pinetown, Durban.

'Good control of web tension is critical in producing the highest quality rewind reels for our customers and the ER610 slitters provide this, as well as faster acceleration and higher running speeds giving us much improved levels of productivity,' he confirmed.

In Pinetown, Nampak Flexible has a number of slitters served by a common materials handling system, so the more compact design of the Titan ER610 has actually improved the working space around the machine without any modifications required to the existing handling system.



Titan ER610 slitter in action at Nampak Flexible, Pinetown, Durban

Available in two widths - 1350 and 1650mm - the ER610 compact slitter has been a great success for Titan with more than 100 machines now installed in many locations across the world.

It features a pneumatically controlled braking system and a digital edge-guide system controls lateral movement of the unwind reel to +/- 2in (50 mm). Slitting systems available include shear knives, rotary razor (burst) or razor slitting in air or groove.

The two ER610 slitters installed at Nampak Flexible include an edge trim extraction system, laser core positioning and shaftless unwind roll pick-up from floor.

The Titan ER610 slitter can process a wide range of flexible materials including plain, printed, coated or metallized film from 20 to 200 micron, a wide range of laminates and paper from 30 to 200 gsm. It is a more environmentally friendly solution with reduced power consumption, no hydraulics for oil-free, hygienic operation, un-lubricated compressed air for zero oil/air emissions and its 'one-piece' design also enables rapid installation and commissioning.

The two Titan ER610 slitters were commissioned during February this year with support from Beswick Machinery (Pty) Ltd., the local agent for Atlas & Titan in South Africa.

'Both Titan slitters were operating at the expected running speeds from the first day in production, so all our expectations have been met,' Mr. Anand Padayachee concluded.

"Good control of web tension as well as faster acceleration and higher running speeds have given us much improved levels of productivity."

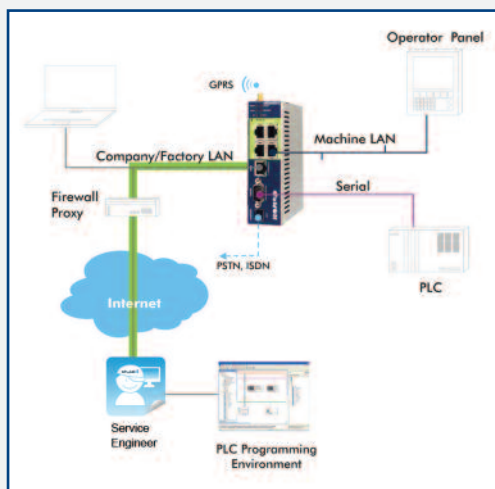


Mr. Anand Padayachee, General Manager, Nampak Flexible Pinetown, Durban



Remote Internet access to Atlas & Titan slitter rewinders via 'Atlas Service Gateway'

"The main benefits of the 'Atlas Service Gateway' are savings in costly machine 'downtime' and periods of lost production for the customer."



How Internet remote PLC maintenance works

The global Service & Customer Support operations for Atlas & Titan slitter rewinders continues to expand its skilled resources with new engineers and technicians joining the company in recent months, both in the UK and in other locations across the world.

The increasing number of new machine installations during the past two years has driven this requirement for additional technicians who at the same time can also cover service of existing installations to further extend product life cycles.

"One other aspect of customer support which has expanded recently is the increasing use of secure connectivity via the internet for remote access to machine diagnostics," explained Paul Reader, Head of Customer Service. "This helps to resolve malfunctions and other software problems related to control systems, without the need for an engineer to travel long distances to rectify faults."

"The main benefits derived from remote access via the 'Atlas Service Gateway' are savings in costly machine 'downtime' and lengthy periods of lost production for the customer," he added.

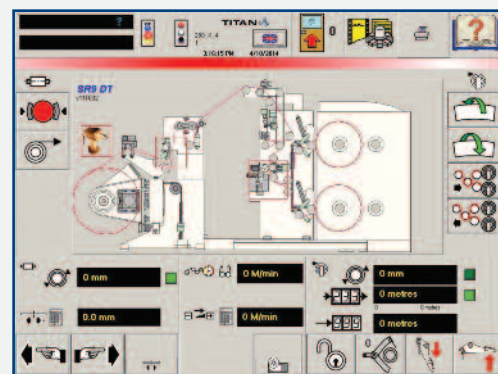
Remote machine diagnostics are now installed on all new Atlas & Titan slitter rewinders (except for the Titan ER610 slitter rewriter) to provide peace of mind for customers during machine commissioning, start-up, warranty periods and beyond, enabling quick response at all times. The system can also be installed as a retro-fit solution to existing machines in the field.

Direct communication via VOIP and video, with secure local approval and access through a sub-division between the machine and the customer's LAN network provides rapid access to update software, drives, PC, PLC and for network interrogation.

An industrial router is the most flexible solution for remote maintenance applications. Serial and Ethernet-based PLCs can be maintained remotely using the PLC software, allowing automation engineers to spend less time on customer sites and reduce expensive travel costs.

The industrial router with an embedded modem can be remotely activated by sending a text message. After the unit receives the text message, it automatically connects to the server.

The most powerful and innovative solution is obtained by using the existing Ethernet LAN infrastructure at the remote site, with its Internet connection, to make the remote device accessible from anywhere in the world over the Internet. As a result, no additional dedicated telecom media are necessary.



Main HMI operator screen of Titan SR9-DT slitter rewriter viewed from remote location

"Connectivity has now become a vital aspect of our remote service operations and more and more customers are benefitting from the rapid support we can provide from a service engineer whether based in one of our service centres or whilst travelling in any other part of the world, with a good internet connection," Paul Reader confirmed.



A Service Engineer can connect to a machine anywhere with good Internet access

Increased productivity with an upgrade of a Titan SR6 slitter rewinder (1995)

Last year, an important Titan customer in North America found that it was encountering various problems caused by obsolete components on its Titan SR6 duplex slitter rewinder which was installed in 1995.

Naturally, machine downtime was seriously affecting productivity and the Customer Support team at Atlas Converting North America, Inc. in Charlotte, NC was consulted in order to find a solution.



A Titan SR6 duplex slitter rewinder in the mid 1990's

A new control desk was proposed to provide all components for control of the slitting & rewinding process, including the latest digital Siemens PLC hardware & software for much improved web control. The rewind and main motors were also replaced with AC motors which help to reduce maintenance.

The new desk has a much more user-friendly touch screen for all machine control parameters with hard wired stop/start controls. Product dependent settings can be stored in PDF files which enables quick change-over times between different jobs, which also improves productivity. The system gives precise control of web tension and contact pressure, providing improved and more repeatable rewind quality.

In addition, other related upgrades in machine specification were completed at the same time. These included the fitting of a semi-automatic rewind shaft unloading system and new differential rewind shafts – or 'Quick Shafts'.

The rewind shaft unloading system pushes the finished rewind reels off the rewind shafts to a trolley or unloading boom. This reduces the risk of repetitive strain injuries and fatigue to the machine operators and also helps to reduce potential damage to the rewind reels due to improved handling, delivering better quality rewind packages.

Operation is easy with a user-friendly, two-handed control system for safety. The control systems are integral to the rewind shaft unloading system for ease of

installation using AC drives for low maintenance. This reel unloading system is mounted above the rewind section with a single paddle to push the reels off the rewind shafts of the Titan SR6.

The customer also decided to install a laser core positioning system and new differential rewind shafts in conjunction with the new rewind shaft unloader at the same time.

This made re-coring of the rewind shafts much quicker and easier, more consistent and much more accurate, reducing damage to the cores and the friction elements of the rewind shafts during set-up.

The new 76mm (3 inch) 'Quick Shafts' installed work on the principle of differential winding. The torque to obtain tension is transferred using radial pressure, which ensures consistent tension across the web.

The differential 'Quick Shafts' improved the winding capabilities of the SR6 slitter with improved tension control and also require no set-up time for varying slit widths, which provides a huge benefit in productivity.

The customer reported that the upgrade completed last November has made a huge difference to slitting and rewinding productivity on its Titan SR6 duplex slitter, which has been in operation for almost 20 years.

'The upgrade of the Titan SR6 slitter last November has made a huge difference to slitting productivity.'



Titan SR6 control desk - upgraded

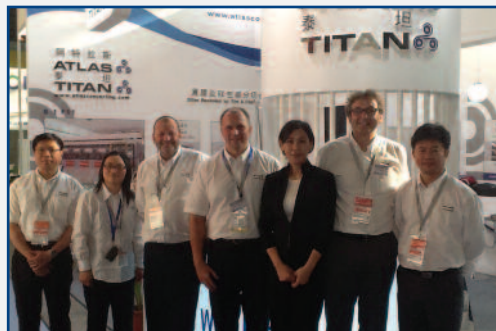


'It is important to have a customer support team of Chinese professionals in place to provide service for existing equipment and new machinery.'

ATLAS 
TITAN 

- Atlas Converting Equipment Ltd.**
 Wolseley Road, Kempston
 Bedford MK42 7XT
 United Kingdom
 T: +44 1234 852553
 F: +44 1234 851151
sales.atlas@atlasconverting.com
sales.titan@atlasconverting.com
- Atlas Converting North America, Inc.**
 9801-F Southern Pine Boulevard
 Charlotte, NC 28273
 United States
 T: +1 704 587 2450
 F: +1 704 587 2451
sales.usa@atlasconverting.com
ventas.mexico@atlasconverting.com
- A.C.E. (Shanghai) Trading Co. Ltd.**
 6P, New Shanghai International Tower
 360 South Pudong Road
 Shanghai 200120, China
 T: +86 21 6886 2501
 F: +86 21 6886 2502
sales.atlas@atlasconverting.com
sales.titan@atlasconverting.com
- Atlas Converting Equipment (India) Pvt. Ltd.**
 Plant No. 13, Extension Office Building
 Pirojsha Nagar, Vikhroli (East)
 Mumbai 400 079, India
 T: +91 992 081 9791
 F: +91 222 623 3009
sales.atlas@atlasconverting.com
sales.titan@atlasconverting.com

A.C.E. (Shanghai) Trading Co. Ltd. provides complete customer support services in China



Part of the Atlas China team at the Chinaplas 2013 exhibition in Guangzhou

China is one of the most important markets for Atlas slitter rewinders and has been since the company was established in 1976. The company now has more than 250 Atlas slitter rewinders installed in China so it is important to have a customer support team of Chinese professionals in place not only to provide service for existing equipment but also to install and commission new machinery.

Local inventory of spare parts is also necessary and an administration team is critical to ensure the smooth running of all operations for the customer base in China and liaison with the UK parent company.

Atlas Converting Equipment Ltd. established its China subsidiary company A.C.E. (Shanghai) Trading Co. Ltd. in 2011 shortly after the management buy-out from Bobst.

Prior to that, Atlas always had a physical presence in China but this was as an integral part of either the Bobst or Valmet / Metso operations during the periods when Atlas & Titan were under the foreign ownership of these larger multi-national corporations.

All members of the Atlas team in China speak fluent English. The Service Manager for Greater China, Daniel Zhang, has been with the company for more than 12 years and has extensive experience in slitter rewinder technology.

Daniel is from Shanghai and supported in service by Kerry Ke who joined the company in 2006 and CK Kuan who has been an Atlas Service Engineer since 1989, supporting customers in China and SE Asia for 25 years.

In sales, Raymond Chan first represented Atlas as an agent in China more than 20 years ago and became Sales Manager for Atlas for several years between 1994 and 2005. He re-joined the company in December 2010 as Regional Sales Manager for China shortly after Atlas separated from Bobst.



A.C.E. (Shanghai) Trading Co. Ltd. is on the 6th floor of the New Shanghai International Tower in the Pudong Business District of Shanghai

Events 2014	Venue	Dates
Chinaplas	Shanghai, China	23 - 26 April
FTA Info*FLEX	Baltimore, USA	28 - 29 April
Interpack	Düsseldorf, Germany	08 - 14 May
Rosupak	Moscow, Russia	17 - 20 June
ExpoPack	Mexico City	17 - 20 June
Bobst Africa Flexibles Converting Roadshow	Nairobi, Kenya	24th June
Titan 50th Anniversary Open House	Atlas - Bedford, UK	17th September
Bobst Africa Flexibles Converting Roadshow	Algiers, Algeria	24th September
Equiplast	Barcelona, Spain	30 Sept - 03 Oct.
Titan 50th Anniversary Open House	Atlas - Charlotte, USA	October (TBC)
Plastimagen	Mexico City	18 - 21 November