



**8302**  
Hi-Cone multipack machine  
for beverage cans

## Multipackaging for cans



**9352**  
Hi-Cone multipack machine  
with orientor for beverage cans

**Hi-Cone**  
**TW**

## Benefits of 8302

### Can Height Change

- Can height adjustment is motorised to move drum assembly in pre-determined position.
- Conveyor table remains in fixed position. No adjustment required to dead plate.

### Change over RAC/SAC/MPC

- Simple hand wheel adjustment to make the change-over.
- Main drum is servo driven and provides automatic pre-set timing adjustment.
- Quick release clip on knife assemblies minimise c/o time.
- Simple dovetail mounting for accurate positioning.

### All these features lead to the following benefits:

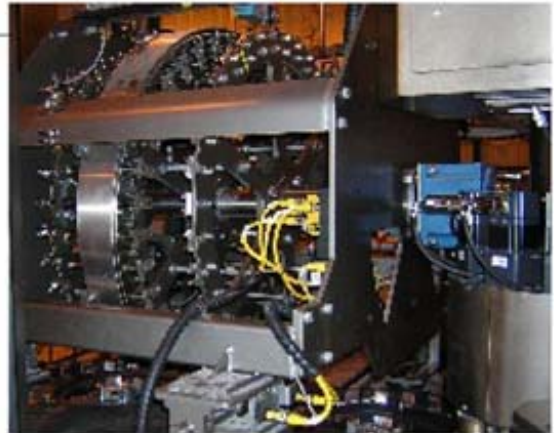
- Reduced labour cost.
- Reduced change over time.
- Improved accuracy of change over.
- Reduced down time.
- Improved line efficiency.
- Reduction in skilled labour needs.

### Diverter

- Diverter blocks are re-positioned on the existing chain to accommodate the new format. 1 person required.
- Motorised adjustment of diverter height to pre-set position.
- Diverter is servo driven and provides automatic pre-set timing.
- Quick change lift out guides for each format.

### Electrical

- Modern Allen Bradley System full CE spec.
- Panel view gives excellent information on condition and settings of the machine.



Drum



Turner Diverter Table



Orientor

## Additional benefits of 9352

- With orientation you take control of brand image on the shelf. You do not depend on the merchandising activity in store.
- Orientation is more than facing. With can design you optimise the billboard effect.
- Through orientation you consistently enhance the quality of the brand image.
- The primary container controls the brand appeal through the whole supply chain: production, distribution, retailer and consumer at home.
- Orientor offers 360 degrees communication, especially necessary at the end of aisle displays and direct palletisation.
- Maximum recognition of on-can promotions.
- Bar code hiding.
- Save merchandising cost at retail outlet.
- Adds Value without extra variable packaging cost.
- Environmentally ideal: no additional packaging material.



### Hi-Cone

#### Rim Applied Carrier (RAC)

- Excellent can protection for long haul transport
- Minimal packaging
- Minimal cost
- Shows primary container
- 2, 4, 6 pack



### Mid-Cone

#### Side Applied Carrier (SAC)

- Consumer convenient carry handle
- Communication with label
- Improved on line stability
- Improved pack integrity
- Further case cost savings with "Trayless"
- 4, 6, 8, 12 pack



### Promotional Mid-Cone

#### Merchandising Panel Carrier (MPC)

- On pack and on shelf impact
- Cost effective in short run promotions
- Quick turn around
- Save cost can replace "Point Of Sale" material
- Ideal for instant win promotions
- 4, 6, 8, 12 pack



### Trayless

- Further case cost savings
- Environmental friendly: mono material solution, less packaging
- Easy pallet stackability



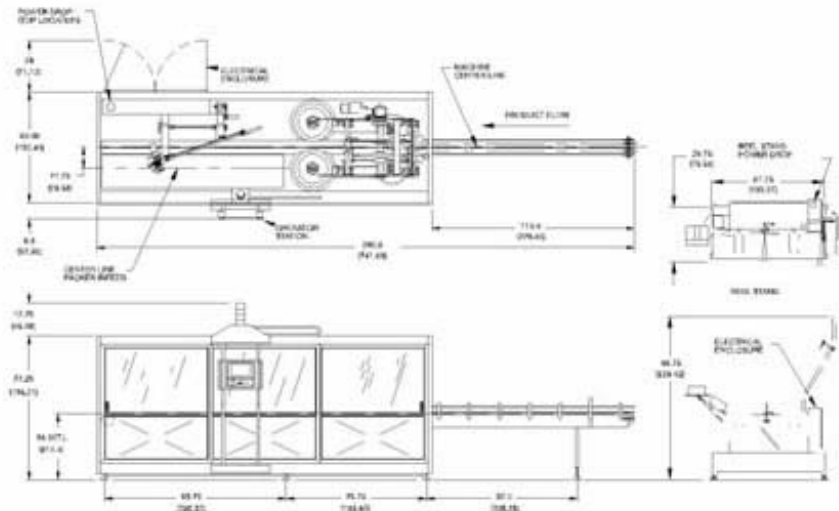
### Facing+orientation



### Design+orientation

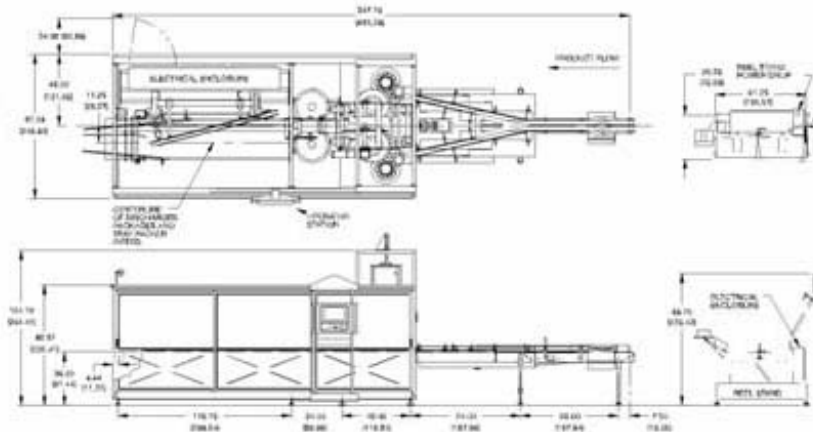
## 8302

Maximum speed:  
2000 cpm  
Power requirements:  
Volt range 380-480  
Amp. Service 45



## 9352

Maximum speed:  
2400 cpm  
Power requirements:  
Volt range 380-480  
Amp. Service 65  
Air requirements:  
50 standard cubic feet  
per minute at 80 psi



**ITW Hi-Cone**

ITW Hi-Cone  
North, South and Latin American  
1140 West Bryn Mawr  
Itasca, IL 60143  
USA  
Tel.: +1 630 438 5300  
Fax: +1 630 438 5315

ITW Hi-Cone  
Australia and Asia  
Unit 6  
1-7 Friars Road  
Moorabbin, Vic 3189  
Australia  
Telf. 9556 6300

ITW Hi-Cone  
Europe  
Poligono Ind. Congost P-5,  
naves 7-8-9  
Apartado de Correos n°7  
08530 La Garriga  
Barcelona, Spain  
Tel.: +34 93 860 50 20  
Fax: +34 93 860 50 22

ITW Hi-Cone  
UK and Middle East  
Greenock Road  
Slough Trading Estate  
Berkshire, SL1 4QQ  
United Kingdom  
Tel.: +44 1753 479 980  
Fax: +44 1753 773 366

[www.hi-cone.com](http://www.hi-cone.com)